

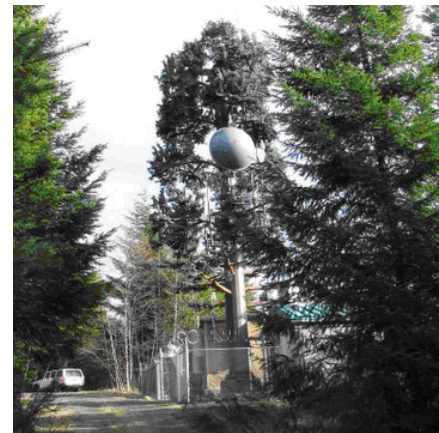
# Past Performance

## *NEPA Documentation Clackamas County Communications Site Lease*

### Environmental Assessment

**Project Description:** Clackamas County proposes to erect a telecommunications tower in the Brightwood area of Clackamas County, Oregon, which will be used for emergency service purposes (police, fire, and rescue) as part of the counties C-800 Phase II implementation. The proposed tower facility is located on land owned and operated by the Bureau of Land Management (BLM), which falls within the Mt. Hood Corridor. In 1996 the Mt. Hood Corridor was designated by Congress to be managed by BLM primarily for the protection and enhancement of scenic qualities. In order to fulfill requirements set forth in the National Environmental Policy Act (NEPA) of 1969; BLM requested preparation of an Environmental Assessment (EA) to analyze the tower's potential impacts to visual and other resource values.

**Project Objectives and Goals:** EyakTek was tasked to prepare the EA document and include visual photographic simulations of the proposed action and action alternative from several individual vantage points selected by BLM within the Mt. Hood Scenic Corridor.



**Other Services and Resources provided by EyakTek to support the EA included:**

*Natural and Cultural Resource Planning*

- State Historic Preservation Office (SHPO) Coordination
- Tribal Historic Preservation Office (THPO) Coordination
- United States Fish and Wildlife Service (USFWS) Coordination

**The EA is available for review at the following weblink:**

<http://www.eyaktek.com/casestudies/ClackamasCoCommLease-EADocument.pdf>

## EyakTek's Wireless Telecom Practice Area

### **EYAKTEK'S WIRELESS PRACTICE AREA**

EyakTek has a highly professional, experienced team with proven experience and performance spanning more than 30 years in the telecom industry. Our team members have direct experience in a variety of wireless telecom networks providing full turn-key build-to-suit networks. The following is an overview of the Services provided by EyakTek's Wireless Practice Area.

### **EyakTek's Wireless Telecom Services**

All of the following services are offered by EyakTek in its Wireless Telecommunications Practice Area:

#### **Wireless Telecom Network and System Planning & Design**

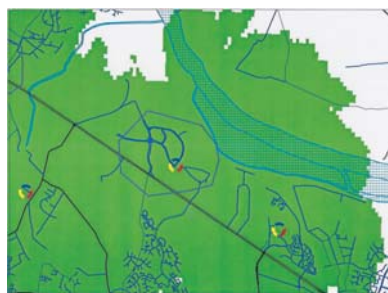
- Expertise in LMR, Cellular/PCS, WLAN & "In-Building" solutions, and SATCOM Networks
- Expertise in network infrastructures for voice and data communications.
- EyakTek provides Network Planning, Design, Engineering, Optimization and Deployment.
- Complete system design and end-to-end solutions for global communications, backhaul, and last mile design and implementation.

#### **Wireless Telecom Network and System Deployment & Program Management**

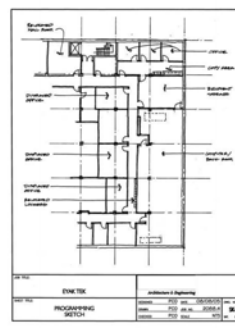
- Upon Completion of the Network System Design, EyakTek can provide Turnkey and "Build-to-Suit" Deployment Services of the LMR, Cellular/PCS, In-Building, and WLAN Networks.
- RF Engineering, Site Interference & Compliance Studies, Performance and Audits
- Site Acquisition and Real Estate Strategies, Leasing & Due Diligence
- Architectural/Engineering/Site Planning and Design
- Zoning, Environmental & Regulatory Review and Representation including: NEPA / SHPO / FAA / FCC
- Major Equipment, Hardware & Software Coordination & Procurement
- Permitting & Construction Management
- Wireless Network System Testing, Installation and Start-up
- Coordination of RF and Radio Equipment Installation, Start-up, Testing and Optimization



*Strategic Planning*



*Systems Integration & Engineering*



*A/E - Civil Design*



*Site Development/Construction*

Wireless Telecommunications Network Solutions & Infrastructure